

BOND UPDATE

June 2024

#ThankYouVoters

WALLER JUNIOR

PHASE 1 COMPLETION SUMMER 2023
PHASE 2 COMPLETION SUMMER 2024



- Site clean up and landscaping are ongoing and 90% complete.
- New perimeter fencing and gates are 90% complete.
- Renovation of classrooms are 99% complete and have started punch list and clean up.
- Overhead MEP punch list is ongoing throughout and ceilings are being covered.
- Tile hallway floors are nearly complete. Rolled flooring is 60% complete
- Casework is being installed in science labs and administration areas.
- Graphics are scheduled to begin installation in June.
- New furniture and teacher box moves are scheduled to begin the week of July 8th.

WALLER JUNIOR HIGH



Phase 2 Addition and Main Entry



Art Courtyard fencing and landscaping

WALLER JUNIOR HIGH



Auditorium seating and flooring



Lobby and Entrance

WALLER JUNIOR HIGH



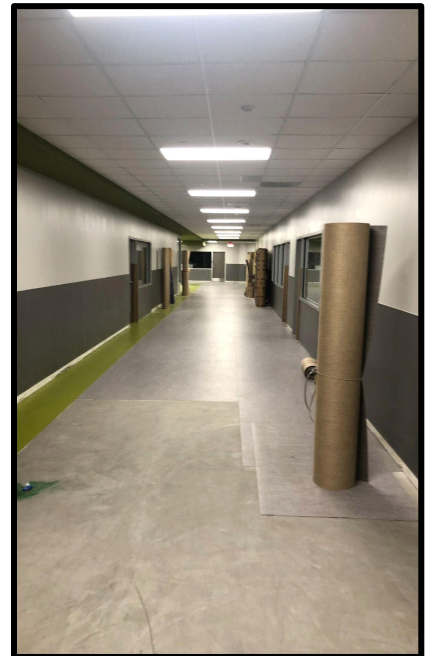
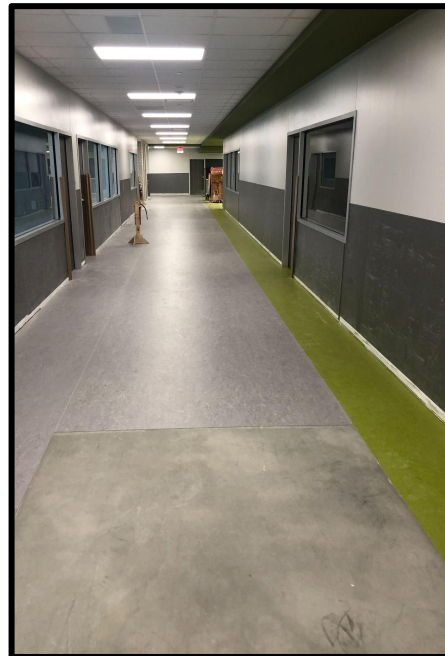
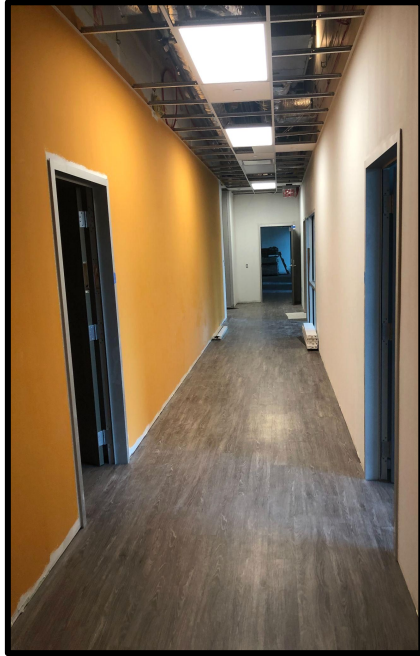
Corridor and Restroom Tile

WALLER JUNIOR HIGH



Classrooms

WALLER JUNIOR HIGH



Front office and classroom hallways



Collaboration area and science casework



Art Classroom & Collaboration



- Exterior paving is nearing completion.
- Fencing is starting.
- Storefront windows and doors are in being installed.
- Finish paint and carpet are in progress.
- Ceiling devices are being installed.
- Low voltage wiring is pulled and systems are being trimmed out.
- Epoxy floors are in progress.
- Food service equipment installations are ongoing.

LOWE ELEMENTARY - #6

DELLROSE



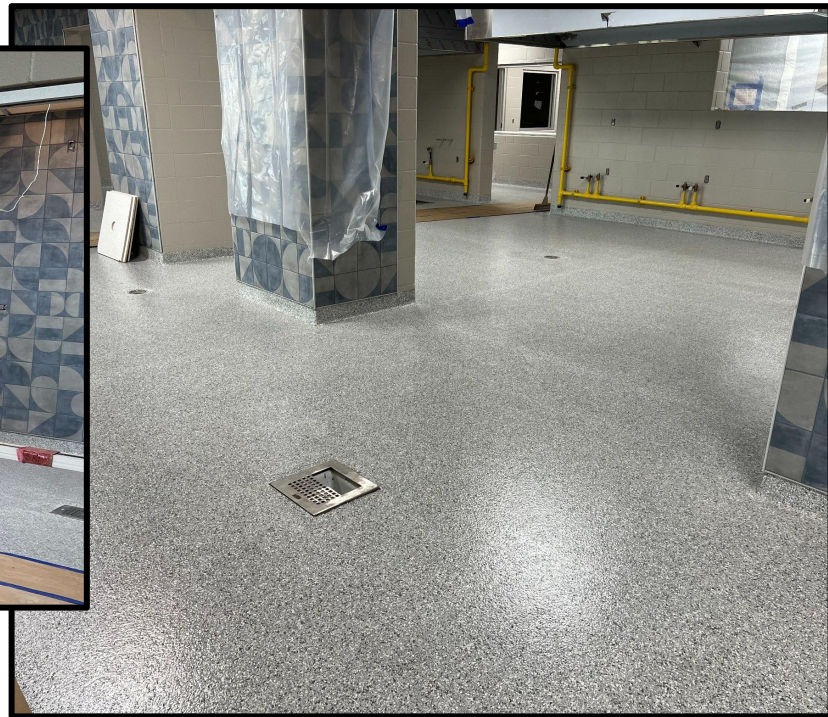


Front Entry and Canopy

LOWE ELEMENTARY



Exterior Roofing and Paving

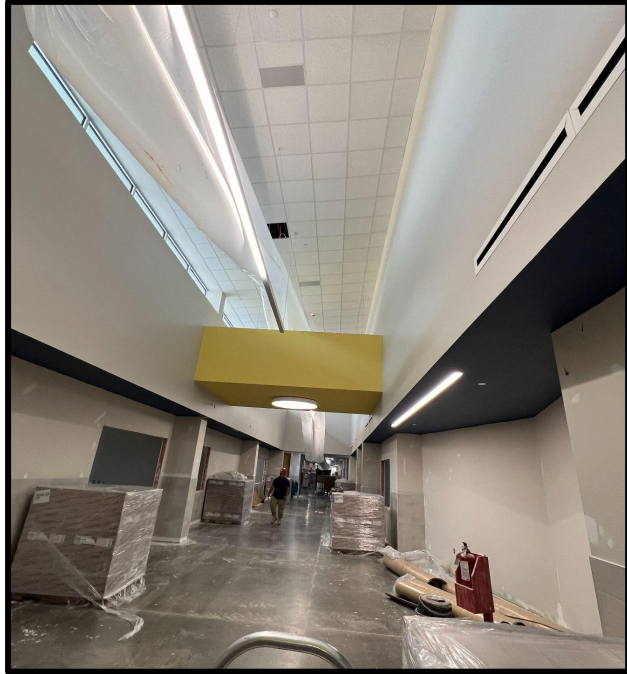


Kitchen



Media Center

LOWE ELEMENTARY



Classroom and corridors

MCREAVY ELEMENTARY - #7

BRIDGELAND



MCREAVY ELEMENTARY



Front Entry



Exterior



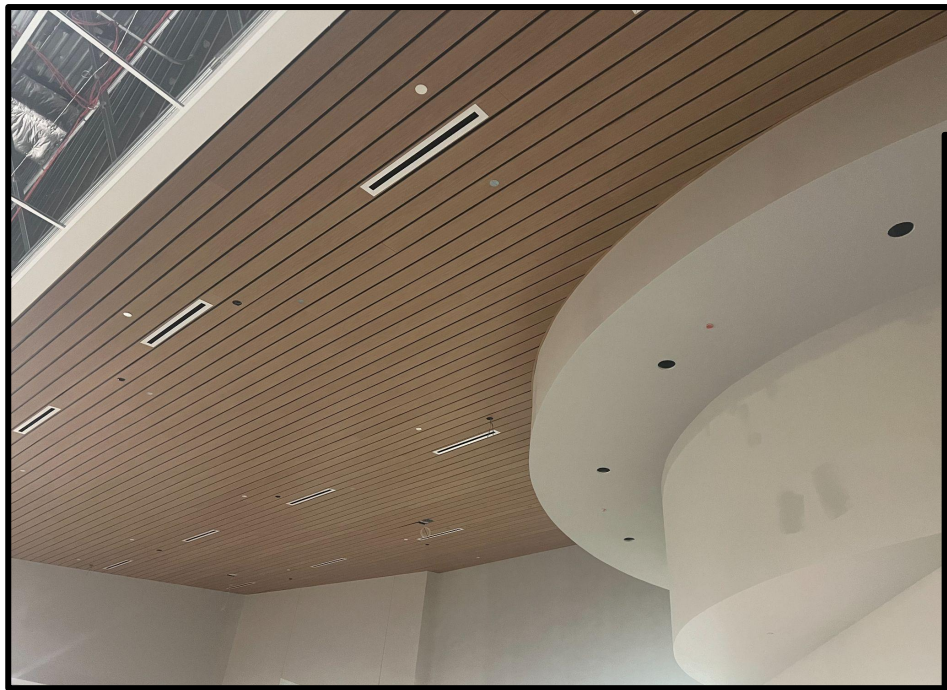
Kitchen





Classroom/Science Lab





Media Center

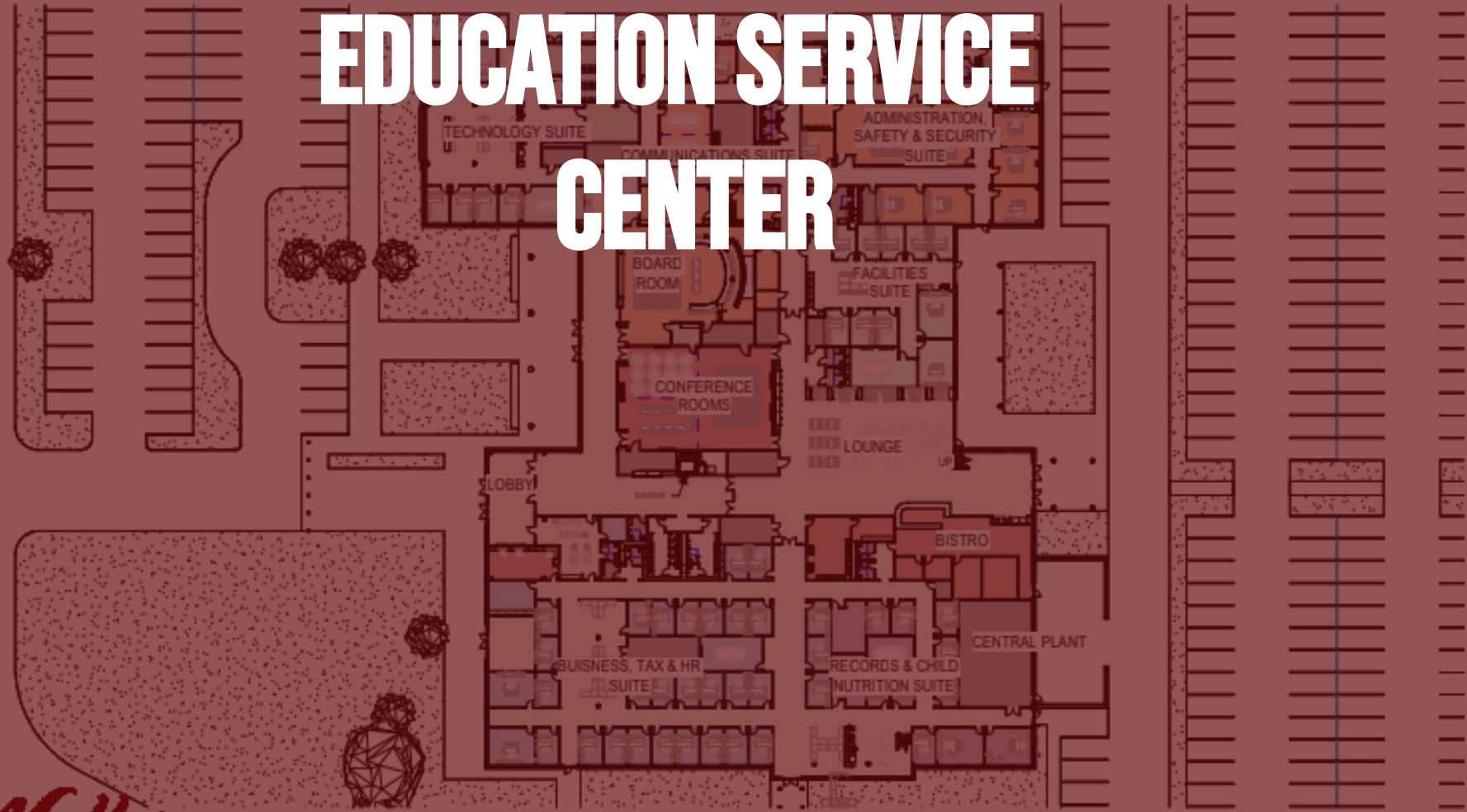




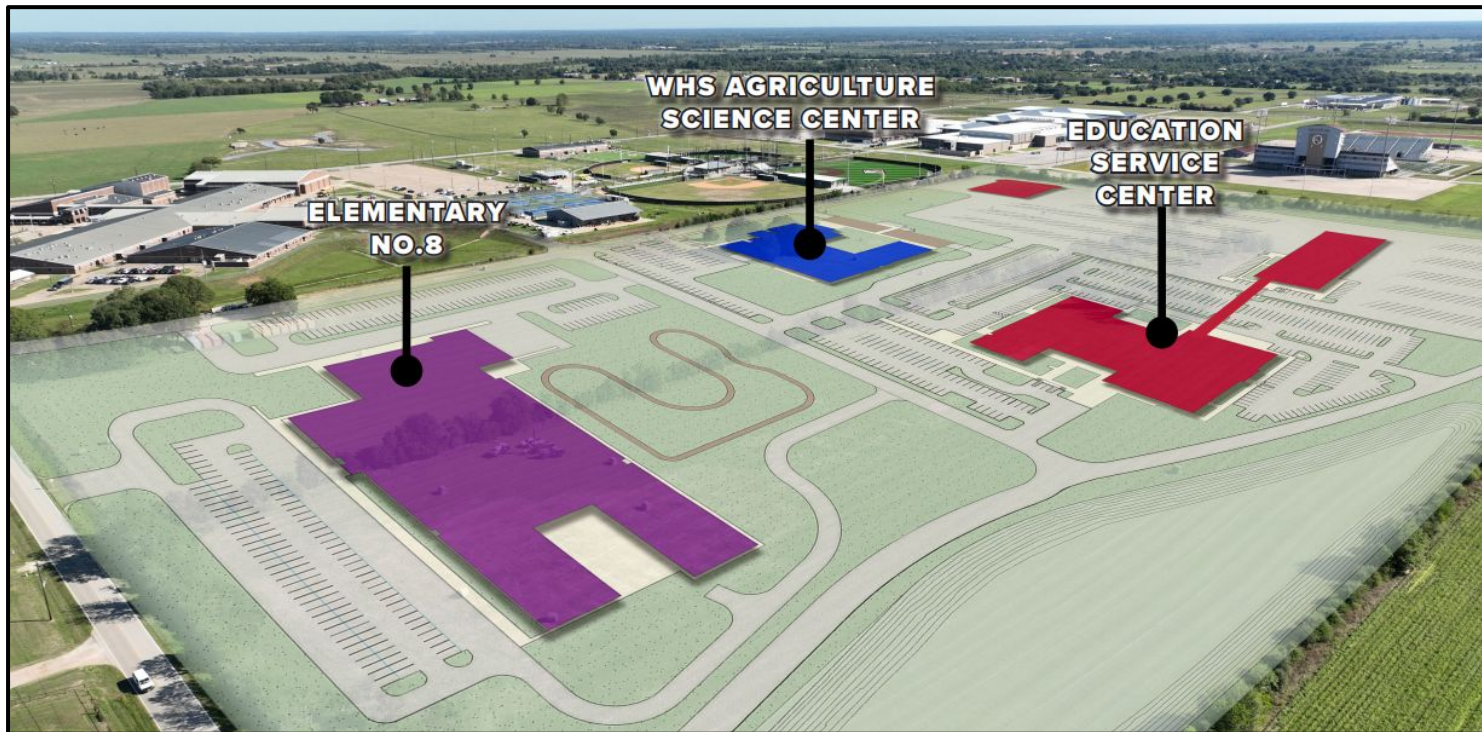
Restrooms



EDUCATION SERVICE CENTER



- Sitework continues on the ESC-Transportation-Ag-Elementary #8 project.
- Stormwater lift station is installed at the detention pond.
- Underground plumbing is complete and slab pours have commenced.
- ESC slab has been completed.
- Steel erection has started on Elementary #8.
- Ag Science pad has been poured and steel arrived June 3rd.



Site Layout

ESC-Ag-Elementary #8



Aerial View - Southwest Corner



Lift Station

ESC-Ag-Elementary #8



Elementary #8

ESC-Ag-Elementary #8



ESC

WALLER ISD
CONSTRUCTION

A photograph of a classroom filled with children of various ages, from young children to teenagers. They are all expressing excitement, with many having their arms raised in the air. The children are seated at small, light-colored tables with blue chairs. The classroom has white walls, a tiled ceiling, and various educational posters and supplies visible in the background. The entire image is overlaid with a semi-transparent red filter.

#ThankYouVoters

Waller
Independent School District